

LXSC/R-15D₃~40D₃ Single Jet Dry Type Vane Wheel Hot Water Meter



Application

- Measuring hot water volume

Working Conditions

- Water temperature: $\leq 90^{\circ}\text{C}$
- Water pressure: $\leq 1.6\text{MPa}$

Features

- Small, light
- Magnetic drive, lower transmission resistance
- Magnetic shield, for external magnetic field protection
- Sealed dry dial register ensures clear reading
- Register can rotate more than 360° for easily reading
- Inlet strainer

Compliance Standards

- Technical data conforms to ISO 4064 Class B Standard for horizontal installation

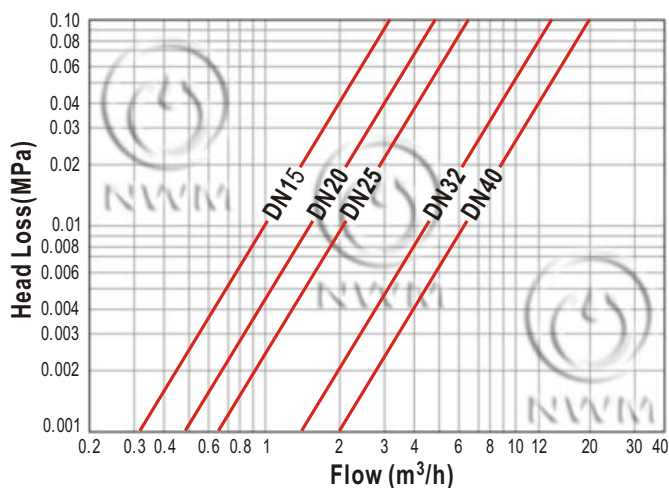
Options

- U.S.gallon (USG) version available
- Pulse output via reed switch
- Non reverse check valves fitted to couplings

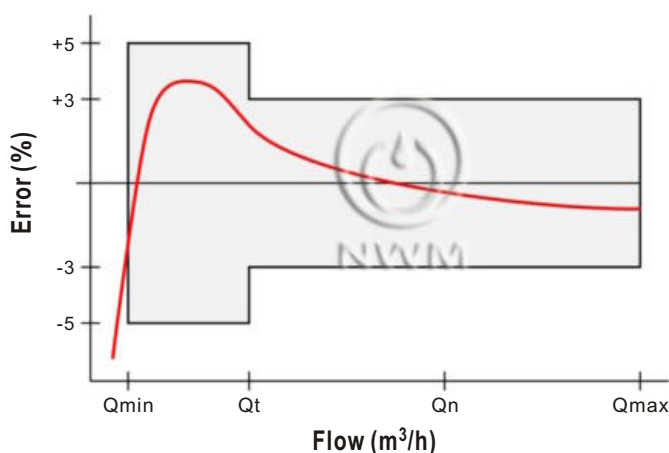
Installation Requirements

- The meter should be installed in horizontal position with the register facing upwards
- Pipeline must be flushed before installation
- The meter should be constantly full of water during operation

Head Loss Curve



Accuracy Curve



Main Technical Data

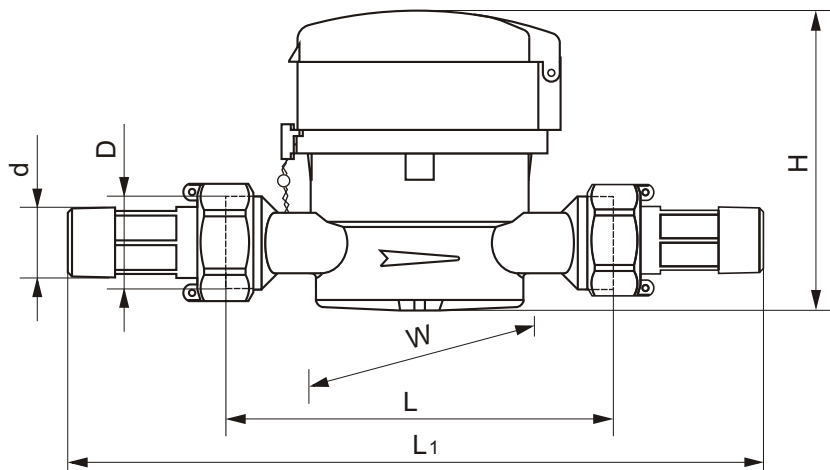
Nominal diameter	DN	15	20	25	32	40
Maximum flow rate	m ³ /h Q _{max}	3.0	5.0	7.0	12.0	20.0
Nominal flow rate	m ³ /h Q _n	1.5	2.5	3.5	6.0	10.0
Transition flow rate	l/h Q _t	120	200	280	480	800
Minimum flow rate	l/h Q _{min}	30	50	70	120	200
Maximum reading	m ³	99999.99995				
Minimum reading	m ³	0.00005				

• Maximum Permissible Error:

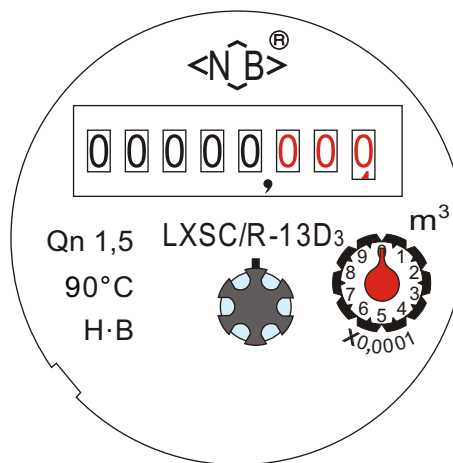
In the lower zone from Q_{min} inclusive up to but excluding Q_t is ±5% .

In the upper zone from Q_t inclusive up to and including Q_{max} is ±3% .

Dimension Picture



Dial



- Flow direction Arrows are provided on both sides of the meter body.
- The lid can open to °120.

Dimensions and Weights

Nominal diameter	DN	15	20	25	32	40
Body thread	D	G3/4B	G1B	G1 ¹ / ₄ B	G1 ¹ / ₂ B	G2B
Connector thread	d	R1/2	R3/4	R1	R1 ¹ / ₄	R1 ¹ / ₂
Body length	mm L	80/110	130	160	160	200
Overall length	mm L ₁	174/204	234	280	284	331
Width	mm W	80	80	80	110	110
Meter height	mm H	88	88	96	123	123
Weight without connectors	Kg	0.5/0.6	0.7	1.05	2.1	2.43
Weight with connectors	Kg	0.68/0.78	0.98	1.57	2.9	3.47

- “L₁” is the total length when coupling gaskets are fitted without compression.