

# LXH/R-15E<sub>4</sub> Volumetric Rotary Piston Hot Water Meter



## Application

- Measurement of hot potable water volume

## Working Conditions

- Water temperature:  $\leq 90^{\circ}\text{C}$
- Water pressure:  $\leq 1.4\text{MPa}$

## Features

- The meter uses suitable heat-resistant materials
- Ensures high sensitivity and accurate registration throughout a wide flow range
- Low starting flow rate and excellent metrological performance
- Magnetic drive, lower transmission resistance
- Magnetic shield, use for external magnetic field protection
- Sealed dry dial register ensures clearly reading
- Register can rotate not more than  $360^{\circ}$
- Central strainer

## Compliance Standards

- Conforms to ISO 4064 Class C Standard

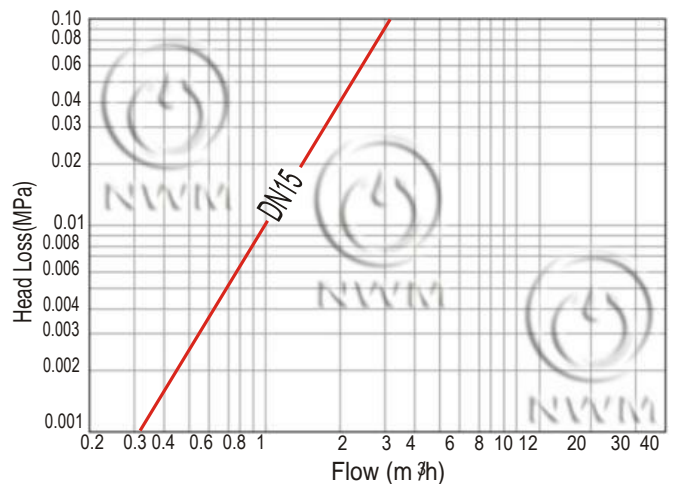
## Option

- Pulsing vis reed switch
- Reverse flow Valve (Single Check Valve)

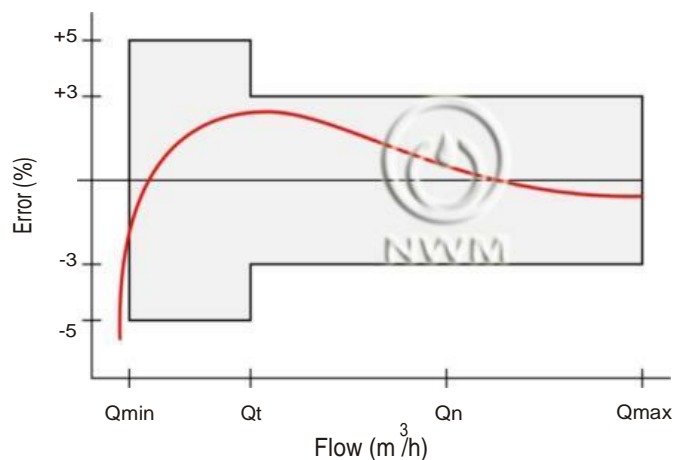
## Installation Requirements

- The meter can be installed in horizontal, vertical, inclined or face down orientations
- A horizontal orientation with the register facing upwards is recommended
- Pipeline must be flushed before installation
- The meter should be constantly full of water during operation

## Head Loss Curve



## Accuracy Curve



## Technical Information

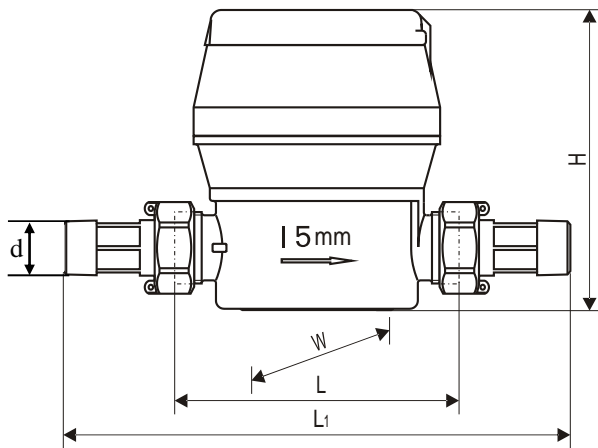
Nominal diameter	DN	15
Maximum flow rate	kL/h	Qmax 3.0
Nominal flow rate	kL/h	Qn 1.5
Transition flow rate	l/h	Qt 22.5
Minimum flow rate	l/h	Qmin 15
Maximum reading	kL	99999.99995
Minimum reading	kL	0.00005

- Maximum Permissible Error:

In the lower zone from Q<sub>min</sub> inclusive up to  
but excluding Q<sub>t</sub> is  $5 \pm \%$

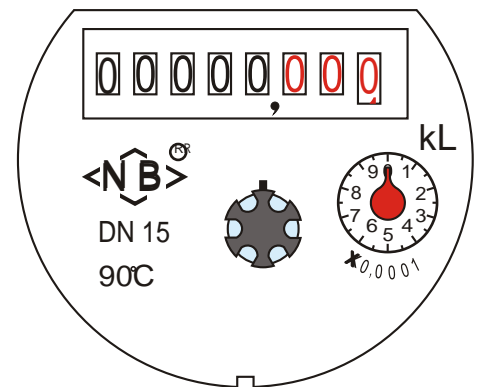
In the upper zone from Q<sub>t</sub> inclusive up to  
and including Q<sub>max</sub> is  $3 \pm \%$

## Dimensions Illustration



- Nominal diameter shown on one side of the body.
- Direction of flow shown on both sides of the body.
- The lid can open to 180°

## Dial



## Dimensions and Weight

Nominal diameter	DN	15
Body thread	D	G3/4B
Connector thread	d	R1/2
Body length	mm	L 105
Overall length	mm	L <sub>1</sub> 199
Width	mm	W 91
Meter height	mm	H 110
Weight without connectors	Kg	1.2
Weight with connectors	Kg	1.38

- "L<sub>1</sub>" is the total length when coupling gaskets without compression.